

# Conditions for sending lithium batteries by international mail

## [Conditions for sending lithium batteries by international mail (Overview)]

All of the following conditions must be met.

- (1) Batteries must be installed in or built-in to the equipment.
- (2) The capacity of the lithium battery or watt-hour rated value, etc. must be within certain limitations.
- (3) The quantity of lithium batteries must be within the prescribed limitation (4 units in the case of electric cell, 2 units in case of assembled battery).
- (4) The mail must be addressed to countries/regions without restrictions on importing lithium batteries.

Button type lithium batteries installed in equipment (\*1) do not fall under the category of dangerous goods by air. So equipment in which button type lithium batteries are installed (\*2) can be sent by either airmail or surface mail.

\*1: **Button type battery** refers to a round-shape battery with a diameter that is larger than its height (also referred to as a coin type battery or Mame battery)



\*2: **Examples of articles for which lithium batteries are used**

- Wrist watch
- Rice cooker
- Desktop computers, etc.
- \* Button type lithium batteries are used for watches and data storage for backup memory.

## Conditions for sending (details) (1) Batteries must be installed in or built-in to the equipment.

The installment or built-in state of batteries in the equipment must comply with the following conditions.

If the batteries are properly installed in commercially-available electronic equipment, they are usually compliant with the conditions mentioned here.

- Batteries must be installed in equipment protected from damage or shorts.
- Batteries must be installed in equipment for which effective measures have been taken to prevent accidental activation of the battery.
- Assembled-type lithium batteries must be manufactured using appropriate materials with sufficient strength for their packing capabilities and intended use, and packed in a designed container with a sturdy exterior. However, this requirement does not apply in cases where the equivalent level of protection is provided by the equipment of the built-in batteries.
- Batteries must be packed in compliance with Part 2 of the Packing Standard 967 (Lithium ion electric cell and lithium ion assembled battery) or Part 2 of the Packing Standard 970 (Lithium metal electric cell and lithium metal assembled battery) stipulated by the latest ICAO technical guidelines.



Please take note

You cannot send the following lithium batteries if they are not installed in the equipment even if the other conditions are met.

- Lithium battery by itself
- Batteries enclosed with the equipment instead of being installed in the equipment (known as being packed together).

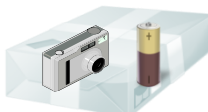
**✗ cannot be sent.**



Lithium battery by itself



Lithium batteries are packed together instead of being installed in the equipment.



**○ can be sent.**



Lithium batteries are installed or built-in to the equipment

\* Lithium batteries are installed in the equipment, and the batteries and equipment are not separated.



## Conditions for sending (details) (2) Conditions related to the capacity of lithium battery or watt-hour rated value, etc. must be met.

Conditions, such as internal capacity and watt-hour rated value provided according to the type and structure of the lithium battery must be complied with.

Batteries used for equipment generally distributed in society (mobile phones, digital cameras, video cameras, laptop computers, etc.) are usually compliant with these conditions.

### Standard for lithium batteries that can be sent by international mail

Classification of battery		Standard for batteries that can be sent by international mail	
Type	Structure	Interior content of lithium	Watt/ hour rated value
Lithium metal battery Lithium alloy battery (Generally non-rechargeable type)	Electric cell (cell)	1 gram or less	—
	Assembled battery (battery)	2 grams or less	—
Lithium battery Lithium polymer battery (Generally rechargeable type)	Electric cell (cell)	—	20 watt-hour or less
	Assembled battery (battery)	—	①100 watt-hour or less ② Watt-hour rated value must be indicated on the exterior container

(Other criteria related to the batteries)

- They must be of a type for which it has been verified that they satisfy the requirements of tests provided by Part 3 Section 38, subparagraph 38.3 of the "United Nations Manual of Tests and Criteria."
- They are not identified as defective for safety reasons by the manufacturer.
- They must not be damaged.
- There must have no possibility of causing hazardous heat, fire or shorts.
- The weight of the batteries must not be more than 5 kilograms.

## Conditions for sending (details) (3) The quantity of lithium batteries must be within the following quantity range

You can mail up to 4 lithium electric cells or up to 2 lithium assembled batteries in one mail item using international mail.

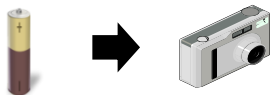
[Examples in which sending is permitted]

Up to 4 lithium electric cells or up to 2 lithium assembled batteries

(Example of installation of lithium batteries)

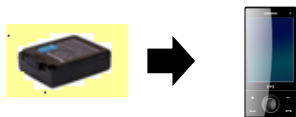
Example 1

Digital camera installed with one electric cell



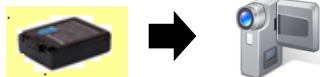
Example 2

Mobile phone installed with one assembled battery



Example 3

Video camera installed with one assembled battery



4 digital cameras



1 mobile phone and 1 video camera

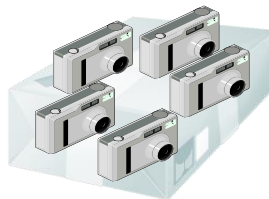


[Examples in which sending is not permitted]

5 or more lithium electric cells or 3 or more lithium assembled batteries



5 digital cameras



2 mobile phones and 1 video camera



## Conditions for sending (details) (4) Mail must be addressed to countries/ regions without restrictions on importing lithium batteries

Countries/ regions where service is available

	Countries/ regions where lithium batteries are handled	
	Airmail, SAL, EMS	Surface mail
a	Afghanistan, Albania, Algeria, Angola, Anguilla, Antigua and Barbuda, Antilles and Aruba (Netherlands), Argentina, Armenia, Ascension Island, Australia, Austria, Azerbaijan	Anguilla, Ascension Island
b	Bahamas, Bangladesh, Barbados, Belgium, Belize, Benin, Bermuda Islands, Bhutan, Bolivia, Brazil, British Virgin Islands, Brunei, Bulgaria, Burkina Faso, Burundi	Bangladesh, Belarus, Bermuda Islands, Botswana, Brunei
c	Cambodia, Cameroon, Canada, Cape Verde, Cayman Islands, Central Africa, Chad, China, Colombia, Comoros Islands, Congo, Cook Islands, Costa Rica, Croatia, Cuba, Cyprus, Czech Republic	Cambodia, Canada, Cayman Islands, China, Croatia
d	Denmark, Dominican Republic	
e	East Timor, Ecuador, Equatorial Guinea, Estonia, Eswatini, Ethiopia	Eswatini
f	Falkland Islands, Fiji, Finland, France (Include Corsica, Andorra and Mayotte), French Guiana, French Polynesia	Falkland Islands, Fiji
g	Gabon, Gambia, Georgia, Ghana, Gibraltar, Greece, Greenland, Grenada, Guatemala, Guadeloupe, Guinea, Guinea-Bissau, Guyana	Gambia, Gibraltar
h	Haiti, Honduras, Hong Kong, Hungary	Hong Kong
i	Ivory Coast, Iceland, India, Indonesia, Ireland, Iran, Iraq, Israel	Indonesia, Israel
j	Jamaica, Jordan	
k	Kazakhstan, Kenya, Kiribati, Kosovo, Kuwait, Kyrgyzstan	Kazakhstan, Kyrgyzstan
l	Latvia, Lesotho, Liberia, Libya, Liechtenstein, Lithuania, Luxembourg	Lesotho
m	Malawi, Malaysia, Maldives, Mali, Marshall Islands, Martinique, Mauritania, Mauritius, Mexico, Micronesia, Moldova, Monaco, Montenegro, Montserrat, Morocco, Mozambique, Myanmar	Malaysia, Mauritius
n	Namibia, Nauru, Nepal Netherlands, New Caledonia, New Zealand, Nicaragua, Niger, Nigeria, North Korea, North Macedonia, Norway, the Northern Territories (Kuril Islands)	Nicaragua, North Korea, the Northern Territories (Kuril Islands)
o	Oman	
p	Pakistan, Palau, Panama, Papua New Guinea, Paraguay, Philippines, Pitcairn Islands, Poland, Portugal	Philippines, Pitcairn Islands, Poland
r	Reunion, Romania, Russia, Rwanda	Russia
s	St. Helena, Saint Kitts and Nevis, Saint Lucia, Saint Vincent, Samoa, Sao Tome and Principe, Senegal, Serbia, Seychelles, Sierra Leone, Singapore, Slovakia, Slovenia, Solomon Islands, South Korea, Spain, St. pierre and Miquelon, Suriname, Sweden, Switzerland, Syria	St. Helena, Saint Lucia, Singapore, Slovenia, South Korea, Sri Lanka, Sweden
t	Taiwan, Tajikistan, Tanzania, The Democratic Republic of the Congo, Togo, Trinidad and Tobago, Tristan da Cunha, Tunisia, Turkmenistan, Turks and Caicos Islands, Turkey, Tuvalu, Tonga	Taiwan, Tristan da Cunha, Turks and Caicos Islands
u	United Arab Emirates, UK, USA and US overseas territories (Guam, Midway Atoll, Northern Mariana Islands, Puerto Rico, Saipan, Samoa, Virgin Islands, Wake Island), Ukraine, Uruguay, Uzbekistan	UK, Uzbekistan
v	Vanuatu, Venezuela, Viet Nam	Viet Nam
w	Wallis and Futuna Islands	
y	Yemen	
z	Zambia, Zimbabwe	

\*Mail items may be returned etc., even from the above-mentioned countries/regions, due to the latest stipulation of laws and regulations of the applicable countries/regions.

Furthermore, in addition to countries/regions which do not handle SAL and EMS, certain electric appliances cannot be sent to some countries/regions. Please check the conditions of the addressed country/ region.

Post offices where service is available

Accepted at post offices nationwide.